

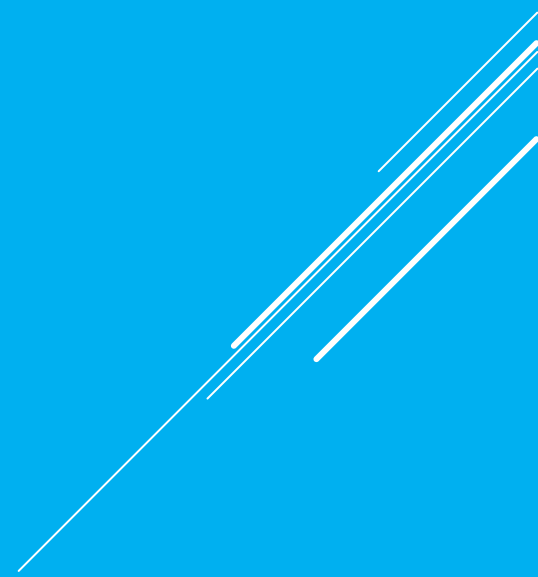


# HUBERT O. SIBLEY K-8 ACADEMY

Diving into Academics!

WELCOME TO  
FSA VIRTUAL 3<sup>RD</sup> -5<sup>TH</sup>  
PARENT NIGHT  
HUBERT O. SIBLEY K-8  
ACADEMY

# AGENDA

- ▶ What are the Florida Standards Assessments?
    - ▶ Subjects and Grades Assessed
    - ▶ Test Schedule
    - ▶ Test Timing
    - ▶ Test Design and Test Item Types
    - ▶ State Science Assessment
    - ▶ Score Information
  - ▶ How are FSA results used?
  - ▶ *Helpful Resources*
- 

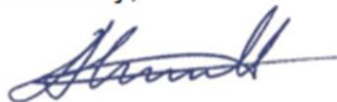
Dear Parent or Guardian:

Miami-Dade County Public Schools strives to provide an excellent educational program for all our students, whether they are attending in person or online. We recognize the unprecedented disruption to the traditional educational program due to the COVID-19 pandemic, especially as we prepare for annually administered state tests. As you may recall, the Florida Department of Education cancelled the administration of these assessments last year.

However, this year the Florida Department of Education expects all students to take the Florida Statewide Assessments. This includes the following assessments: FSA English Language Arts Writing and Reading; FSA Mathematics; Statewide Science Assessments; the End-of-Course assessments in Algebra 1, Geometry, Biology 1, Civics, U.S. History, and the Florida Standards Alternate Assessments (FSAA).

The results from these assessments are important and are used to make sure that your child is placed in appropriate classes and receives appropriate instruction and services. As such, all students physically attending school or participating in My School Online will be expected to take these assessments in person at their schools. Your student's school is taking all necessary precautions to provide a safe environment for this testing, and you will be notified of the scheduled time(s) when your student is expected to test. We encourage all students to participate in these important measures of their academic achievement.

Sincerely,



Alberto M. Carvalho  
Superintendent of Schools

## Spring 2021 Florida Statewide and District Testing

The Florida Department of Education (FDOE) requires that all students participate in the Spring 2021 administration of the Florida Statewide Assessments. Miami-Dade County Public Schools (M-DCPS) supports the inclusion of all students who can participate in these assessments to ensure proper placement in courses and the provision of appropriate support services. In addition, M-DCPS has provided guidance to schools on best practices for administering state assessments in the schoolhouse, which include the following:

- Maintaining social distancing at all times
- Ensuring staggered arrival and departure times
- Sanitizing rooms and student workstations and/or computer equipment every day
- Assigning the same desk to students back-to-back on subsequent administration days
- Providing sufficient pencils so that they need not be returned or disinfected after use
- Ensuring the use of Personal Protective Equipment (PPE) by students and staff
- Conducting health screenings at home each day (students and staff)

The table below provides information on the scheduled administration of the Florida Statewide Assessments and District-designated assessments as well as the potential impact on students.



# HUBERT O. SIBLEY K-8 ACADEMY TESTING WINDOW

Assessment	Grade Level	Test Dates(s)
FSA Writing	Grades 4 and 5	April 6, 2021
FSA ELA	Grade 3	April 5-6, 2021
FSA ELA	Grades 4 and 5	May 3-4, 2021
FSA Math	Grades 3-5	May 5-6, 2021
Fcat science 2.0	Grade 5	May 10-11, 2021

# WHAT SUBJECTS AND GRADES ARE TESTED?

- ▶ **Grades 3,4, & 5 - FSA English Language Arts (ELA)**

- ▶ **Grades 4-5 FSA Writing**

- ▶ *A student must take both the Writing and Reading tests to receive an FSA ELA score.*

- ▶ **Grades 3,4, & 5 - FSA Mathematics**

- ▶ **Grade 5 only - Statewide Science Assessment**

# **Good Cause Exemptions from Mandatory Third Grade Retention**

## **Florida Department of Education**

1. Limited English proficient students who have had less than 2 years of instruction in an English for Speakers of Other Languages program based on the initial date of entry into a school in the United States.
2. Students with disabilities whose individual education plan indicates that participation in the statewide assessment program is not appropriate, consistent with the requirements of s.1008.212.
3. A student who demonstrates through a student portfolio that he or she is performing at least at Level 2 on the statewide, standardized English Language Arts assessment.
4. . Students with disabilities who take the statewide, standardized English Language Arts assessment and who have an individual education plan or a Section 504 plan that reflects that the student has received intensive instruction in reading or English Language Arts for more than 2 years but still demonstrates a deficiency and was previously retained in kindergarten, grade 1, grade 2, or grade 3.
5. Students who have received intensive reading intervention for 2 or more years but still demonstrate a deficiency in reading and who were previously retained in kindergarten, grade 1, grade 2, or grade 3 for a total of 2 years. A student may not be retained more than once in grade 3.

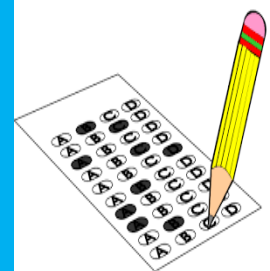
# ARE THE TESTS TIMED? YES!

- **FSA Writing – Grades 4 and 5**
  - 120 minutes (1 session)
  - A **3-minute break** after 60 minutes of testing
- **FSA ELA – Grades 3, 4, and 5**
  - 160 minutes over two days
    - 80 minutes – Day 1
    - 80 minutes – Day 2
  - A short break is given after 40 minutes of testing
- **FSA Mathematics – Grades 3, 4, and 5**
- **Statewide Science – Grade 5**





# PAPER-BASED TEST MATERIALS



## ▶ **Grade 3-5 ELA & Mathematics**

- ▶ Students will receive a Test and Answer Book
- ▶ Students will work problems in their Test & answer book.

## ▶ **Grades 4 and 5 Writing**

- ▶ Students receive Writing Planning Sheet, Test & Answer Book

## ▶ **Grade 5 Science**

- ▶ Students will receive a Test Book & Answer Book/Sheet

▶ *Practice Tests have been developed by DOE. Students will have an opportunity to take the practice test at the school prior to the actual test.*

- ▶ *Available on the FSA portal for public access.  
Go to **fsassessments.org > Practice Tests***



## Planning Sheets

- Before you begin, your test administrator will give you a **planning sheet** that you may use to take notes and plan your writing.
- Your test administrator will collect your planning sheet at the end of the test session.
- While testing, make sure that your planning sheet is not easily visible to other students.

# FSA ELA Writing



## Test and Answer Books

You will receive an FSA ELA Writing test and answer book that contains reading passages, a writing prompt, and **three** lined pages where you will write your response.

Make sure you write inside the box that contains the lines.

# WRITING PROMPT

Read the “The Wild Among Us” passage set.

## The Wild Among Us

### Source 1: The Howl Next Door

by Julie McPartland

1 Ahhh-eeee-ouuu! Coyotes are famous for their howl. People often think of coyote howls as a sound far off in the wild mountains or open plains. They imagine sitting by a fire and listening to nighttime conversations between the wild canines in the distance. That high-pitched cry is not always so far away, though. More and more, coyotes are found in or near cities.

### Source 2: Power Chewers

by Karl Szymas

5 A flash of a bushy tail, a speedy furry chase, the sudden stop—a squirrel hangs upside down on the underside of a large branch, listening. He uses his strong claws to defy gravity and, if we remain still, we can watch as he scampers further up the tree. A squirrel is such a common sight in many cities that most of us do not stop to think about them. One of the squirrel’s most powerful traits is also one of its most troubling secrets. Squirrels’ teeth never stop growing.

### Source 3: Pigeons and People

by Nicole Wilson

8 Look up in any major city and you may spot a pigeon perched on the ledge of a building. Tall buildings have only been common in cities for a few hundred years. Where did pigeons hang out before that? Many pigeons living in cities today are descendants of rock doves. Rock doves originally made their homes in steep cliffs that bordered the ocean. Tall

Write an informative essay about the effects wild animals and humans have on each other when they live in the same area. Use information from the passages in your essay.

Manage your time carefully so that you can

- read the passages;
- plan your response;
- write your response; and
- revise and edit your response.

Be sure to include

- an introduction;
- information from the passages as support; and
- a conclusion that is related to the information presented.

Your response should be in the form of a multiparagraph essay. Write your response in the space provided.



## Taking the Test


- Read each passage carefully and respond completely to the writing prompt.
- Your writing should show that you can organize and express your thoughts clearly.
- You are required to write your response in English.
- Manage your time carefully so that you have time to read the passages, plan your response, write your response, and proofread, revise, and edit your response.

# TEST ITEM TYPES - ELA

- ▶ ELA Item Types

- ▶ **Multiple Choice**

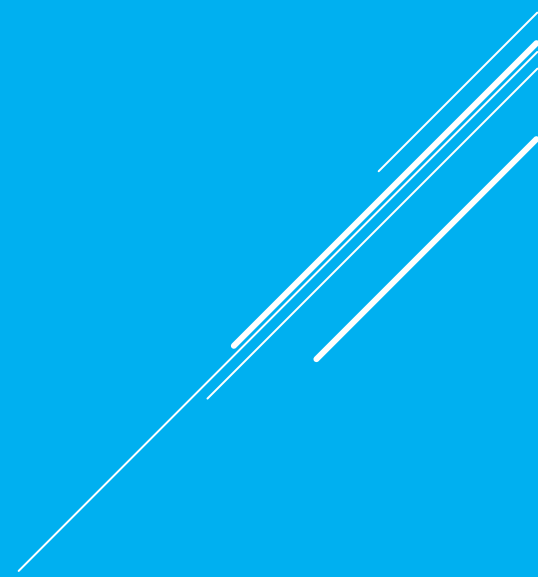
25-50% of test is composed of enhanced items which include...

- ▶ **Multi-Select**
    - ▶ **Selectable Text**
    - ▶ **Multi-Part**
    - ▶ **Table Match**
    - ▶ **Editing Task Choice**
- 

# TEST ITEM TYPES - MATH

## ▶ Math Item Types

- ▶ Multiple Choice
- ▶ Multi-Select
- ▶ Table Match
- ▶ Response Grid
- ▶ Editing Task Choice





# REFERENCE SHEETS

- ▶ Grades 4 & 5 Math will receive reference sheets
  - ▶ Grade 4 some formulas will be on the reference sheet
  - ▶ Grade 5 some formulas may be included with the test item
- ▶ Grade 3 Math does not receive a reference sheet

## Grade 4 FSA Mathematics Reference Sheet

### Customary Conversions

1 foot = 12 inches  
1 yard = 3 feet  
1 mile = 5,280 feet  
1 mile = 1,760 yards

1 cup = 8 fluid ounces  
1 pint = 2 cups  
1 quart = 2 pints  
1 gallon = 4 quarts

1 pound = 16 ounces  
1 ton = 2,000 pounds

### Metric Conversions

1 meter = 100 centimeters  
1 meter = 1000 millimeters  
1 kilometer = 1000 meters

1 liter = 1000 milliliters

1 gram = 1000 milligrams  
1 kilogram = 1000 grams

### Time Conversions

1 minute = 60 seconds  
1 hour = 60 minutes  
1 day = 24 hours  
1 year = 365 days  
1 year = 52 weeks

### Formulas

$$A = lw$$

$$P = 2l + 2w$$

## Grade 5 FSA Mathematics Reference Sheet

### Customary Conversions

1 foot = 12 inches  
1 yard = 3 feet  
1 mile = 5,280 feet  
1 mile = 1,760 yards

1 cup = 8 fluid ounces  
1 pint = 2 cups  
1 quart = 2 pints  
1 gallon = 4 quarts

1 pound = 16 ounces  
1 ton = 2,000 pounds

### Metric Conversions

1 meter = 100 centimeters  
1 meter = 1000 millimeters  
1 kilometer = 1000 meters

1 liter = 1000 milliliters

1 gram = 1000 milligrams  
1 kilogram = 1000 grams

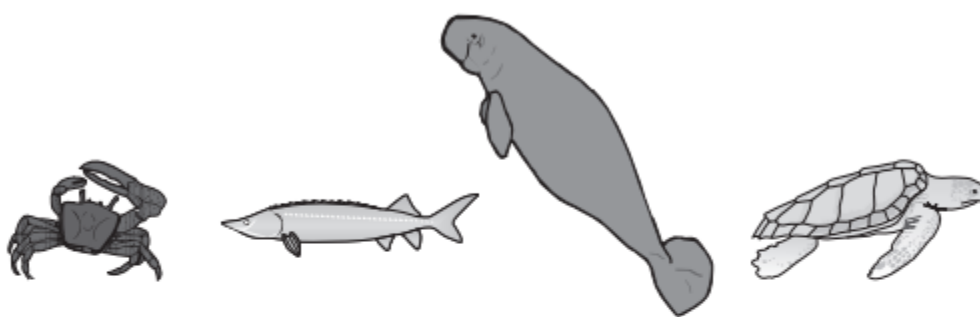
### Time Conversions

1 minute = 60 seconds  
1 hour = 60 minutes  
1 day = 24 hours  
1 year = 365 days  
1 year = 52 weeks

# TEST DESIGN - SCIENCE

- ▶ All items on the Grade 5 Science test are multiple choice.

The organisms shown below live in or near bodies of water. Some are classified as vertebrates and some as invertebrates.



The image shows four illustrations of aquatic organisms. From left to right: a crab, a fish, a manatee, and a turtle. Each illustration is positioned above its respective label.

**Crab**      **Fish**      **Manatee**      **Turtle**

not to scale

Which organism is classified as an invertebrate?


- A. crab
- B. fish
- C. manatee
- D. turtle

# ELECTRONIC DEVICES

- ▶ **No** electronic devices are permitted during testing
  - ▶ Students **MAY NOT** have any electronic device (e.g., cell phone, mp3 player, game system, etc.) on them **OR** within arm's reach even if they do not use them.
  - ▶ **This is cause for immediate invalidation of test.**



# SUPPORTS WE HAVE PUT IN PLACE TO ENSURE YOUR CHILD IS SUCCESSFUL

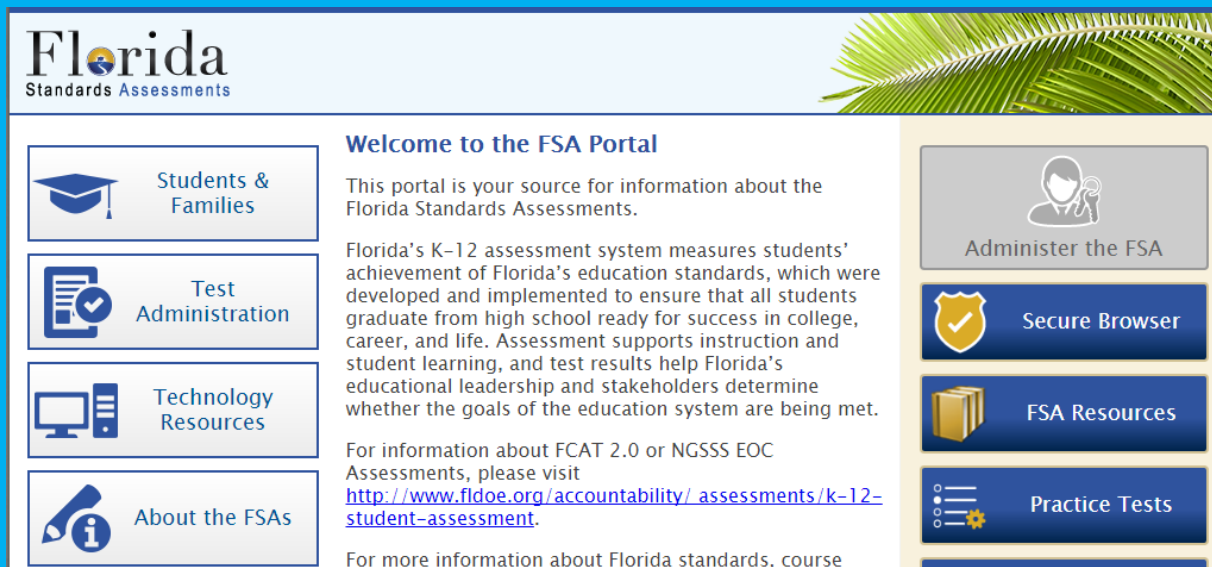
- ▶ Spring Break Academy.
  - ▶ Instruction aligned with Florida standards and is data-informed.
  - ▶ Writing workshops
  - ▶ Math Bootcamp
- 

# How can I support my student?

- Parents and families can promote student success by staying involved in their student's education, offering positive support and feedback, and encouraging their child to relax and do his or her very best.
- By staying connected with their student's school and teachers and taking advantage of online resources, such as school websites and portals, parents and families can stay informed and be equipped to meet the needs of their student at home.
- To help students, parents/guardians, and educators understand what the FSA test items will look like, the department provides computer-based and paper-based practice tests on the FSA Portal.
- Encourage attendance throughout tutoring sessions scheduled.

# FSA PORTAL

- ▶ FSA Portal: [www.FSAssessments.org](http://www.FSAssessments.org)
  - ▶ The FSA Portal was developed as a communication tool by the Florida Department of Education and contains all published information regarding FSA assessments, and released **Practice Tests**
  - ▶ Access to the portal and information is public.





# HELPFUL RESOURCES

- ▶ **FSA Portal**

[www.FSAssessments.org](http://www.FSAssessments.org)

- ▶ **Florida Department of Education Web Site**

<http://www.fldoe.org>

- ▶ **School Accountability Reports**

<http://schoolgrades.fldoe.org>





Q & A / CONCERNS